

THE LARRY ALDRICH MUSEUM FOUNDATION, INC.

Main Street, Ridgefield, Connecticut

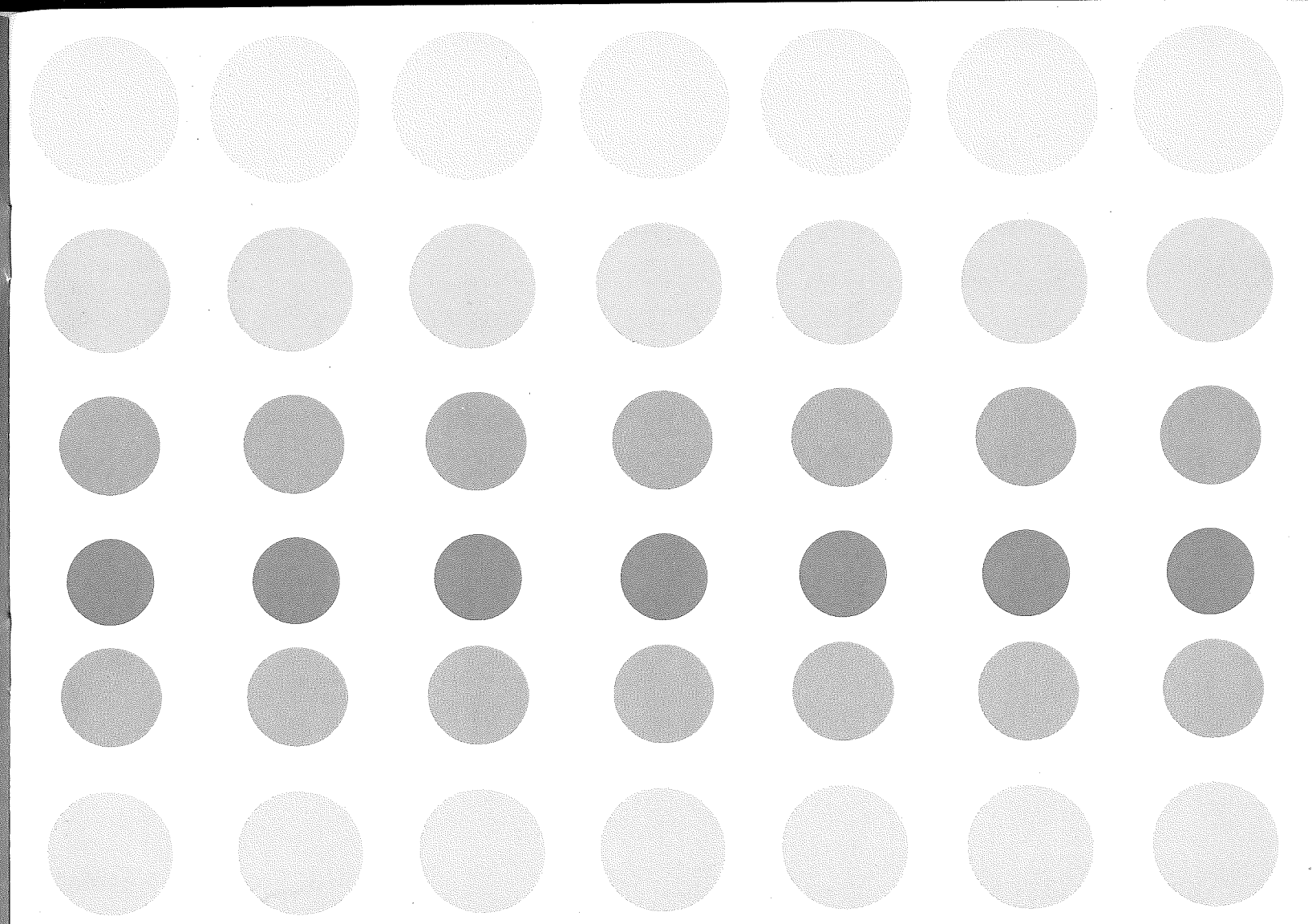
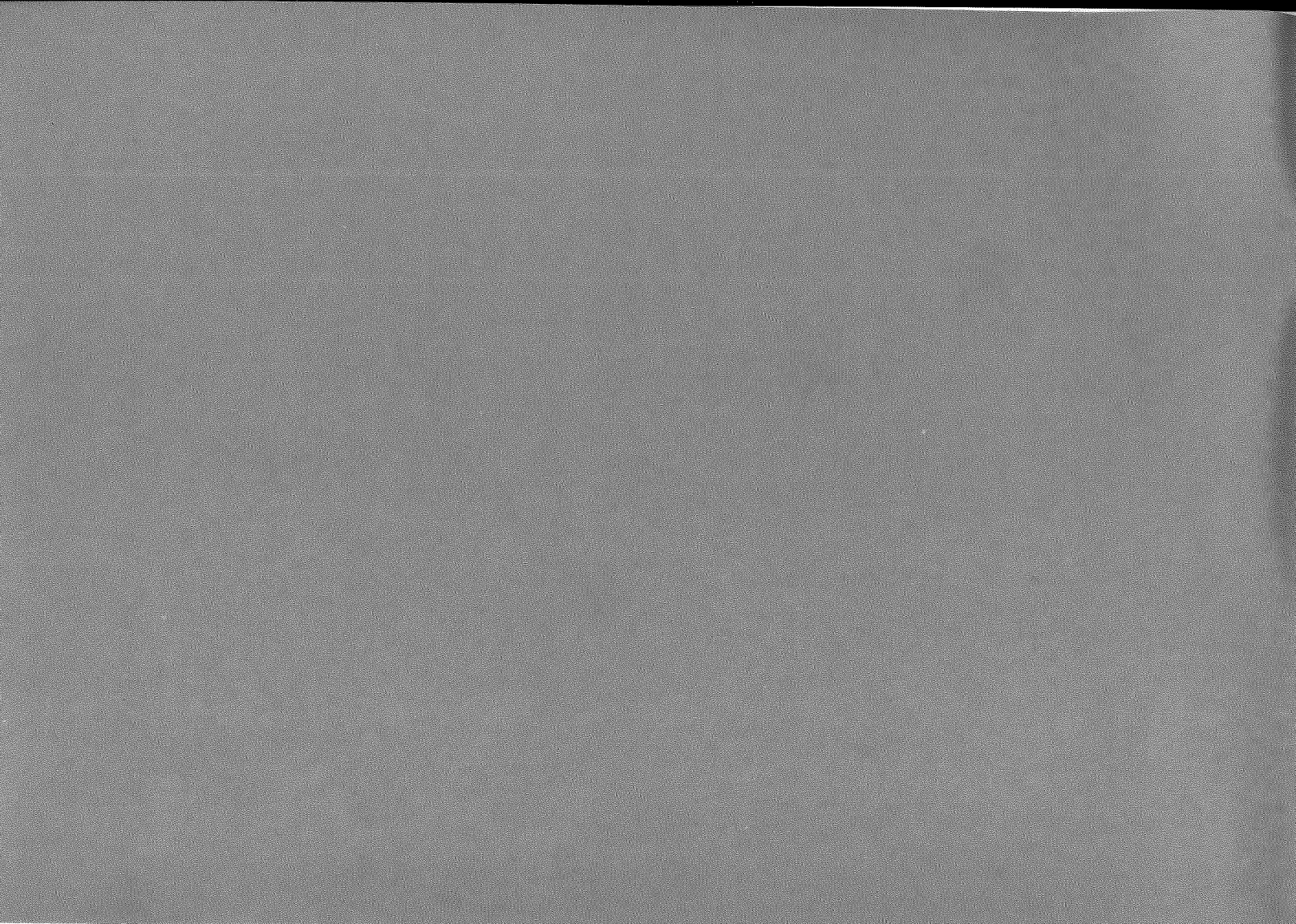
The Larry Aldrich Museum

“old hundred”

Ridgefield, Connecticut

OPENING EXHIBITION:

Selections from The Larry Aldrich Contemporary Collection, 1951-1964



“old hundred”

THE LARRY ALDRICH MUSEUM

“old hundred”

Main Street, Ridgefield, Connecticut

OPENING EXHIBITION:

Selections from The Larry Aldrich Contemporary Collection, 1951-1964

"Old Hundred"

"*Old Hundred*" is a post-revolutionary mansion on the Main Street of Ridgefield, Connecticut which has been completely renovated by Mr. and Mrs. Larry Aldrich to provide a museum for the exhibition of contemporary art.

Built in 1783 by King and Dole, two lieutenants in the Revolutionary War, "*Old Hundred*" derived its name from its use until 1883 as a grocery and hardware store, where, in the evenings, it was a center for discussions of the affairs of the state and the nation.

Grace King Ingersoll, a descendent of one of the founders of the store, took over the building as her residence. She is credited with raising the building to install a spacious first floor with a ceiling of ten feet. It has been used since 1929 as the First Church of Christ Scientist.

Extensive alterations have been made to convert "*Old Hundred*" into a museum, preserving most exterior features of the old landmark.

A diversified calendar of exhibitions of contemporary art and programs of interest to the general public are planned. A reference library and reading room will be available for artists and students. The library will be expanded to meet the demands of specialized research and the general needs of the community. The reference material will begin with the Impressionist movement and will keep pace with the latest contemporary developments in art.

The Opening Exhibition

A selected exhibition of seventy-five paintings and twenty works of sculpture, international in character, collected since 1951, will open the new museum. Mr. Aldrich, renowned as an art collector and as a leader in the world of fashion, started to acquire in 1937 works of art from the Impressionist, Post-Impressionist, and Expressionist schools.

It was not until 1951 that he began to collect contemporary paintings and sculpture. His first purchases were Zao Wou-Ki's *Red Still Life* and Vieira da Silva's *Noon Break*, both shown in the present exhibition.

As Mr. Aldrich continued to acquire other contemporary works of art, he found his interest became completely involved in the newer works.

In 1963, he sold at auction most of his earlier collection, including Gauguin's *Washerwoman*, a 1918 *White & Purple Waterlilies* by Claude Monet, Picasso's *Femme Nue Assise* of 1908, as well as works by Degas, Chagall, Kirschner, Matisse, Renoir, Soutine, Utrillo, and Vuillard.

For several years, Mr. Aldrich has been an active proselytizer for contemporary art, and a portion of his collection has toured throughout the country. He has personally attended each opening, to tell the story of how he became a collector. Opening the new museum represents the expression of his desire to share with others his pleasure in living with twentieth century art.

OPENING EXHIBITION: Selections from the Larry Aldrich Contemporary Collection, 1951-1964

The arrangement of the galleries present the scope and the specific areas of Mr. Aldrich's contemporary acquisitions since 1951.

FIRST FLOOR GALLERIES:

The entrance gallery contains his first 1951 purchases and a related group of French and Italian abstract expressionists.

The central area concentrates on the visually exciting works of "the optical magicians."

The east gallery contrasts the paintings of the neo-dada symbolists with the new expressionist paintings depicting the figure and exploring man's sense of his own identity.

SECOND FLOOR GALLERIES:

The entrance gallery to the right is devoted to important and large abstract expressionist works.

Two central galleries display the sculpture collection along with an intimate group of textural paintings.

The white room presents current abstract paintings in which figural and landscape motifs are apparent.

Catalogue

1. ALECHINSKY, PIERRE (born Belgium, 1927)
Les Familiars, 1959
Oil on canvas, 51¼ x 76½
2. ANUSZKIEWICZ, RICHARD (born America, 1930)
Exact Quantity, 1963
Liquitex on masonite, 18 x 31
3. APPEL, KAREL (born The Netherlands, 1921)
Garçon de la Lune, 1953
Oil on canvas, 30⅞ x 25
4. AVEDISIAN, EDWARD (born America, 1936)
Untitled, 1964
Liquitex, 48 x 48
5. BARUCHELLO, GIANFRANCO (born Italy, 1924)
*La Verita Come Ipotesi Peggior*e, 1963
Oil on canvas, 24½ x 24½
6. BAZAINE, JEAN RENE (born France, 1904)
Indian Summer, 1953
Oil on canvas, 45¾ x 35¼
7. BEAUCHAMP, ROBERT (born America, 1923)
White Nude, 1963
Oil on canvas, 52 x 53
8. BENGSTON, BILLY AL (born America, 1934)
Pecos Bill, 1961
Oil on masonite, 28 x 28
9. BERGMAN, ANNA-EVA (born Sweden, 1909)
Une Peinture, 1961
Oil on canvas, 41 x 65
10. BISSIER, JULIUS (born Germany, 1893)
28, August, '60, 1960
Oil tempera on textile, 8¼ x 10¼
11. BROWN, JOAN (born America, 1938)
Things on a Flying Carpet, 1959
Oil on canvas, 56 x 60
12. BUDD, DAVID (born America, 1927)
Composition, 1958, 1958
Gouache on glass and paper collage, 30 x 30

- | | | | |
|--|--|--|---|
| 13. CHIMES, THOMAS (born America, 1921) #31, 1962 Oil on canvas, 16¼ x 22¼ | 19. ESTEVE, MAURICE (born France, 1904) <i>Composition</i> , 1958 Watercolor, 19¾ x 25½ | 25. GILLET, ROGER EDGAR (born France, 1924) <i>Peinture</i> , 1959 Oil on canvas, 24 x 27¼, oval | 31. HARTUNG, HANS (born Germany, 1904) <i>Composition</i> , 1955 Oil on canvas, 63¾ x 44 |
| 14. CICERO, CARMEN (born America, 1926) <i>The Kiss</i> , 1955 Oil on canvas, 36 x 48⅞ | 20. FORAKIS, PETER (born America, 1927) <i>My 1963</i> , 1963 Oil on canvas, 34½ x 24⅞ | 26. GOLUB, LEON (born America, 1922) <i>Head I</i> , 1959 Oil and lacquer on canvas, 38 x 32 | 32. HEDRICK, WALLY (born America, 1928) <i>Spirit and Idea I</i> , 1958 Oil on canvas, 40 x 30 |
| 15. COURTRIGHT, ROBERT (born America, 1926) <i>Untitled</i> , 1963 Collage and tempera construction, 20 x 15 | 21. FRANCIS, SAM (born America, 1923) <i>Composition</i> , 1958 Gouache, 30 x 22½ | 27. GOODMAN, SIDNEY (born America, 1936) <i>Revolving Door</i> , 1963 Oil on canvas, 24 x 20 | 33. HOLDEN, NORMAN (born America, 1935) <i>Billiard Balls III</i> , 1963 Mixed media, 16¾ x 13½ |
| 16. DAVIE, ALAN (born Scotland, 1920) <i>The Prayer</i> , 1956 Oil on masonite, 63 x 79 | 22. FREILICHER, JANE (born America, 1924) <i>Trees in Meadow</i> , 1957 Oil on canvas, 40 x 30 | 28. GOODNOUGH, ROBERT (born America, 1917) <i>The Frontiersman</i> , 1958 Oil on canvas, 67 x 60 | 34. HONEGGER, GOTTFRIED (born Switzerland, 1917) <i>Assimilar</i> , 1960 Oil on canvas, 31½ x 31½ |
| 17. DUBUFFET, JEAN (born France, 1901) <i>Trotte Gigot</i> , 1959 Oil on canvas, 45¼ x 35¾ | 23. FUKUI, NOBUMITSU (born Japan, 1942) <i>Work #5</i> , 1964 Acrylic on canvas, 40 x 49½ | 29. GOTTLIEB, ADOLPH (born America, 1903) <i>Return</i> , 1962 Oil on canvas, 48 x 72 | 35. INDIANA, ROBERT (born America, 1928) <i>Love is God</i> , 1964 Oil on canvas, 67½ x 67½ |
| 18. DUFOUR, BERNARD (born France, 1922) <i>Untitled</i> , 1956 Oil on canvas, 36¼ x 29 | 24. GIACOMETTI, ALBERTO (born Switzerland, 1901) <i>Annette</i> , 1957 Oil on canvas, 36 x 29 | 30. HARTIGAN, GRACE (born America, 1922) <i>Dun Laoghaire</i> , 1958 Oil on canvas, 71 x 39½ | 36. JARVAISE, JAMES (born America, 1925) <i>Hudson River School Series #50</i> , 1958 Oil on canvas, 51 x 44⅞ |

- | | | | |
|--|---|---|---|
| 37. JENKINS, PAUL (born America, 1923) <i>Phenomenon Eden March</i> , 1963 Oil on canvas, 36 x 36 | 43. MACRIS, CONSTANTIN G. (born Greece, 1919) <i>City Haze</i> , 1959-60 Oil on canvas, 38 x 51½ | 49. NAITO, RAKUKO (born Japan, 1935) <i>Black and White Circle</i> , 1964 Liquetex on canvas, 32 x 32 | 55. RILEY, BRIDGET (born England, 1931) <i>Hesitate</i> , 1964 Emulsion on board |
| 38. JENSEN, ALFRED (born Guatemala, 1903) <i>Magic 18</i> , 1960 Oil on canvas, 54 x 30 | 44. MANESSIER, ALFRED (born France, 1911) <i>Le Torrent I</i> , 1959 Oil on canvas, 38 x 51 | 50. OLIVEIRA, NATHAN (born America, 1928) <i>Standing Man with Stick II</i> , 1959 Oil on canvas, 40 x 28 | 56. RIVERS, LARRY (born America, 1924) <i>Still Life</i> , 1954 Oil on canvas, 20 x 27 |
| 39. JOHNSON, LESTER (born America, 1919) <i>Young Man Before a Fence</i> , 1963 Oil on canvas, 24 x 36 | 45. MARFAING, ANDRE (born France, 1925) <i>Composition</i> , 1958 Oil on canvas, 48 x 57½ | 51. OSTLIHN, BARBRO (born Sweden, 1930) <i>Tower</i> , 1963 Oil on canvas, 41 x 45½ | 57. ROMITI, SERGIO (born Italy, 1928) <i>Ceiling Lamp</i> , 1958 Oil on canvas, 25½ x 23¾ |
| 40. KELLY, ELLSWORTH (born America, 1923) <i>Blue-Green</i> , 1961 Oil on canvas, 68 x 50 | 46. MAROTTA, GINO (born Italy, contemp.) <i>Odlage Verde</i> , 1957 Oil and cloth collage on paper, 28 x 39⅝ | 52. PARZINI, LUIGI (born Italy, contemp.) <i>Alta Montagne</i> , 1957 Oil on canvas, 40 x 33 | 58. RONALD, WILLIAM (born Canada, 1926) <i>Opus #4</i> , 1963 Oil on canvas, 48 x 40 |
| 41. KRAA, KIRSTEN (born Germany, 1941) <i>Untitled</i> , 1964 Oil on canvas, 48 x 63 | 47. MARSICANO, NICHOLAS (born America, 1914) <i>She</i> , 1963 Oil on canvas, 60½ x 52 | 53. PRASSINOS, MARIO (born Greece, 1916) <i>La Ville</i> , 1962 Oil on canvas, 35½ x 45¾ | 59. SANDER, LUDWIG (born America, 1906) <i>Untitled</i> , summer, 1963 Oil on canvas, 44 x 40 |
| 42. LEVEE, JOHN (born America, 1924) <i>May I</i> , 1959, 1959 Oil on canvas, 59 x 23½ | 48. MOYEN, FRANCOIS (born Chile, contemp.) <i>Red and Gray Abstraction</i> , undated Oil and aggregate on canvas, 23¾ x 36⅞ | 54. RICHENBURG, ROBERT (born America, 1917) <i>Wall</i> , 1958-9 Oil on canvas, 39 x 39 | 60. SINGIER, GUSTAVE (born France, 1909) <i>Jardin Marin II</i> , 1959 Oil on canvas, 34⅞ x 45¾ |

- | | |
|---|---|
| <p>61. SOULAGES, PIERRE (born France, 1919) <i>Peinture</i>, 1960 Oil on canvas, 62 x 58</p> <p>62. STAMOS, THEODOROS (born America, 1922) <i>Soundings III</i>, 1963-4 Oil on canvas, 48 x 36</p> <p>63. STANCZAK, JULIAN (born Poland, 1928) <i>Resonate Red</i>, 1963 Acrylic on canvas, 30 x 30</p> <p>64. SUZUKI, JAMES (born America, 1932) <i>My Last Affair</i>, 1960 Oil on canvas, 48 x 40</p> <p>65. TAPIES PUIG, ANTONIO (born Spain, 1923) <i>Verde Sobre Morado Oscuro</i>, 1958 Oil and aggregate on canvas, 31¾ x 39¼</p> <p>66. TROVA, ERNEST (born America, 1927) <i>Study: Falling Man Series</i>, 1963-4 Latex on canvas, 37 x 37</p> | <p>67. TUM SUDEN, RICHARD (born America, 1936) <i>Crown</i>, 1962 Liquetex on canvas, 48 x 48</p> <p>68. UBAC, RUDOLPHE RAOUL (born Belgium, 1910) <i>Formes Pleines II</i>, 1959 Gouache, 25½ x 20</p> <p>69. VAN LEYDEN, ERNST O. A. (born The Netherlands, 1892) <i>Garden of Zen</i>, 1963 Collage, 18½ x 16</p> <p>70. VASARELY, VICTOR (born Hungary, 1908) <i>Zint</i>, 1952-60 Oil on canvas, 19¾ x 17½</p> <p>71. VIEIRA DA SILVA, MARIA HELENA (born Portugal, 1908) <i>Noon Break</i>, 1951 Oil on canvas, 16 x 20½</p> <p>72. WOJCIECHOWSKY, AGATHA (born Germany, 1896) <i>Untitled</i>, 1963 Watercolor, 19½ x 16</p> |
|---|---|

73. WOJCIECHOWSKY, AGATHA (born Germany, 1896)
Untitled, 1963
Oil on canvas, 9 x 12
74. YOUNGERMAN, JACK (born America, 1926)
Ios, 1959
Oil on canvas, 26⅞ x 30⅞
75. ZAO WOU-KI (born China, 1920)
Red Still Life, 1951
Oil on canvas, 18 x 21¾

• Dimensions are given in inches; height precedes width.

Sculpture

1. BAUERMEISTER, MARY (born Germany, 1934)
Stone Group, 1964
Stones, 24 x 24
2. BERROCAL, MIGUEL ORTIZ (born Spain, 1933)
Crime in Cuenca: Lovers, 1961
Metal, 20 x 40 (2 elements)
3. BOLOMEY, ROGER (born America, 1918)
Hoboken #14, 1964
Polyurethane/aluminum, 64 x 52
4. BROWN, JUDITH (born America, 1932)
November 25, 1963, 1963
Steel, 36 x 12½
5. CESAR (BALDACCHINI) (born France, 1921)
The Guardsman, 1960
Steel, 14½ h.
6. DE LAP, TONY (born America, 1927)
Magpie, 1963
Metal and canvas construction, 30 x 30
7. IPOUSTEGUY, JEAN-ROBERT (born France, 1920)
Le Bon Dieu, 1960
Bronze, 18½ x 18½
8. MASTROIANNI, UMBERTO (born Italy, 1910)
Constellation, 1963
Bronze, 20 h.
9. METCALF, JAMES (born America, 1925)
Francisque, 1960-1
Metal, 25½ h.
10. MIKUS, ELEANORE (born America, 1927)
Tablet #49, 1963
Flat enamel on wood, 48 x 30½
11. PADOVANO, ANTHONY (born America, 1933)
Bolton, 1964
Steel, 18½ x 31 x 10
12. PAOLOZZI, EDUARDO (born England, 1924)
Black Devil, 1957
Bronze, 19 h.
13. PENALBA, ALICIA (born Argentina, 1918)
Faune des Mers, 1959
Bronze, 17¼ x 32¼
14. PICASSO, PABLO (born Spain, 1881)
Jug with Two Faces, 1952
Bronze, 11½ h.
15. PNIEWSKA, BARBARA (born Poland, 1933)
Composition, 1964
Cut aluminum panel on block board, 23½ x 34¾
16. SELEY, JASON (born America, 1919)
Eduardo, 1962
Steel, 23 h.
17. SMITH, DAVID (born America, 1906)
Parrot's Circle, 1958
Steel, 24½ h.
18. STUART, IAN (born Ireland, 1926)
High Pitch, 1963
Unique metal, 14 h.
19. WILLENBECHER, JOHN (born America, 1936)
Play Me #1, 1964
Construction, 12¾ x 8 x 3¼
20. WOTRUBA, FRITZ (born Austria, 1907)
Walking Man, 1952
Bronze, 17¼ h.

ACKNOWLEDGMENTS: Mr. Aldrich expresses his appreciation for the advice and invaluable aid of Mrs. Aldrich; Edward G. Wallace, architect; and Betty Ajay, Landscape designer; who have contributed to the planning and achievement of the museum in its first exhibition.

THE OPENING EXHIBITION: Exhibition design, catalog design: Carlus Dyer

Public relations, catalog research: Ethel Margolies

THE LARRY ALDRICH MUSEUM FOUNDATION, INC.

Main Street, Ridgefield, Connecticut

